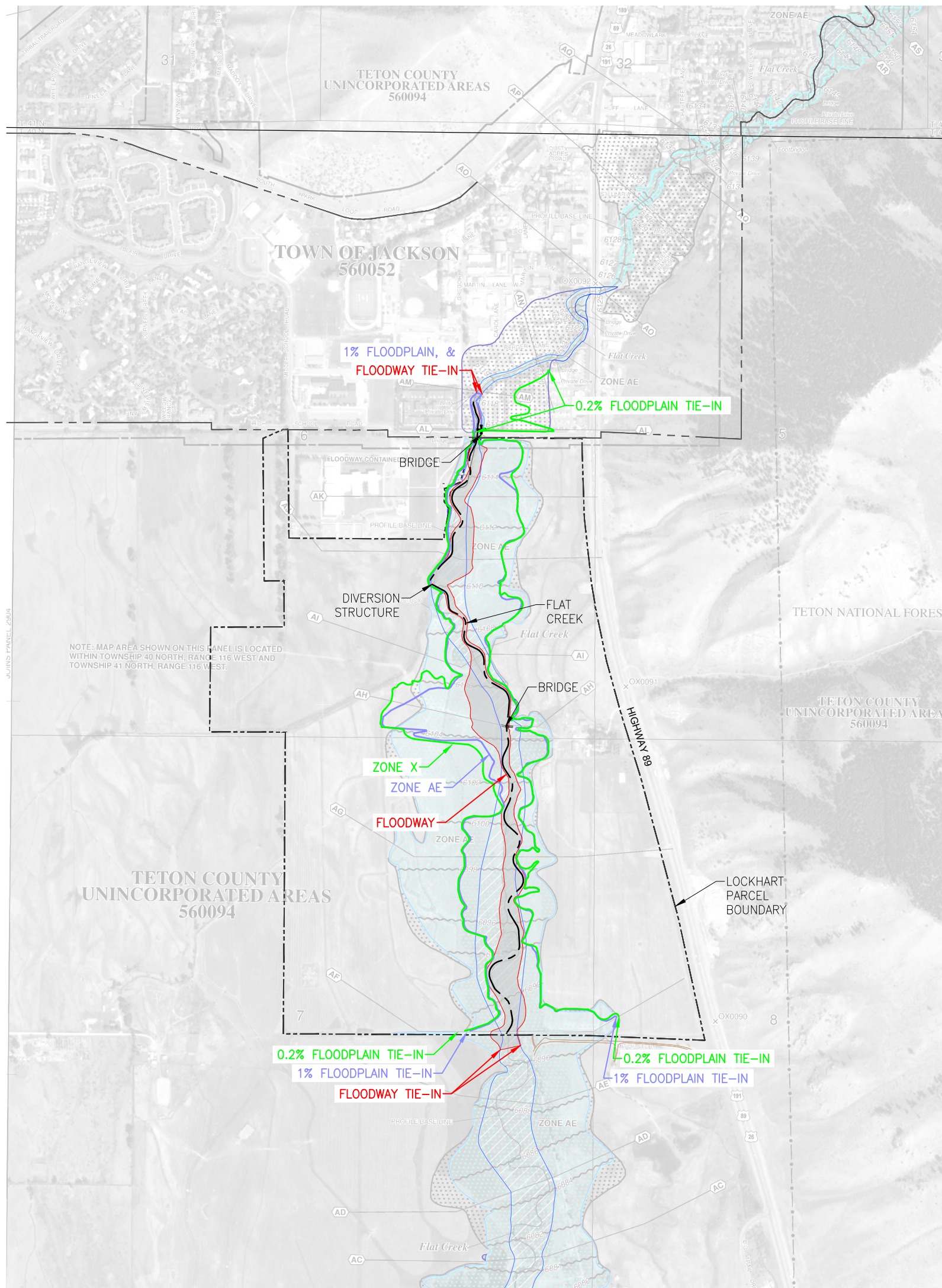






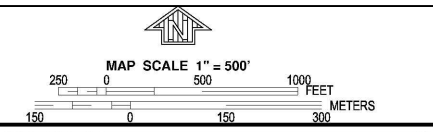


S:\Projects\191923-01 Flat Creek Restoration\Drawings\DWG\LAND\UNINCORPORATED FIRING.dwg PLOTTED BY gvr DWG FORMAT: 233



LEGEND

-  REVISED ZONE AE
-  REVISED ZONE X
-  REVISED FLOODWAY
-  EFFECTIVE ZONE AE (BFE NOT SHOWN)
-  EFFECTIVE ZONE X
-  EFFECTIVE FLOODWAY



NATIONAL FLOOD INSURANCE PROGRAM
PANEL 2908E

FIRM
FLOOD INSURANCE RATE MAP
TETON COUNTY,
WYOMING
AND INCORPORATED AREAS

PANEL 2908 OF 3325
(SEE MAP INDEX FOR FIRM PANEL LAYOUT)
CONTAINS:

COMMUNITY	NUMBER	PANEL	SUFFIX
TETON COUNTY	560094	2908	E
JACKSON, TOWN OF	560052	2908	E

Notice to User: The Map Number shown below should be used when placing map orders; the Community Number shown above should be used on insurance applications for the subject community.



MAP NUMBER
56039C2908E
MAP REVISED
SEPTEMBER 16, 2015

Federal Emergency Management Agency